



**LABOUR DEPARTMENT**  
Government of  
Khyber Pakhtunkhwa



**Bureau of Statistics**  
Khyber Pakhtunkhwa



**UK International  
Development**  
Partnership | Progress | Prosperity



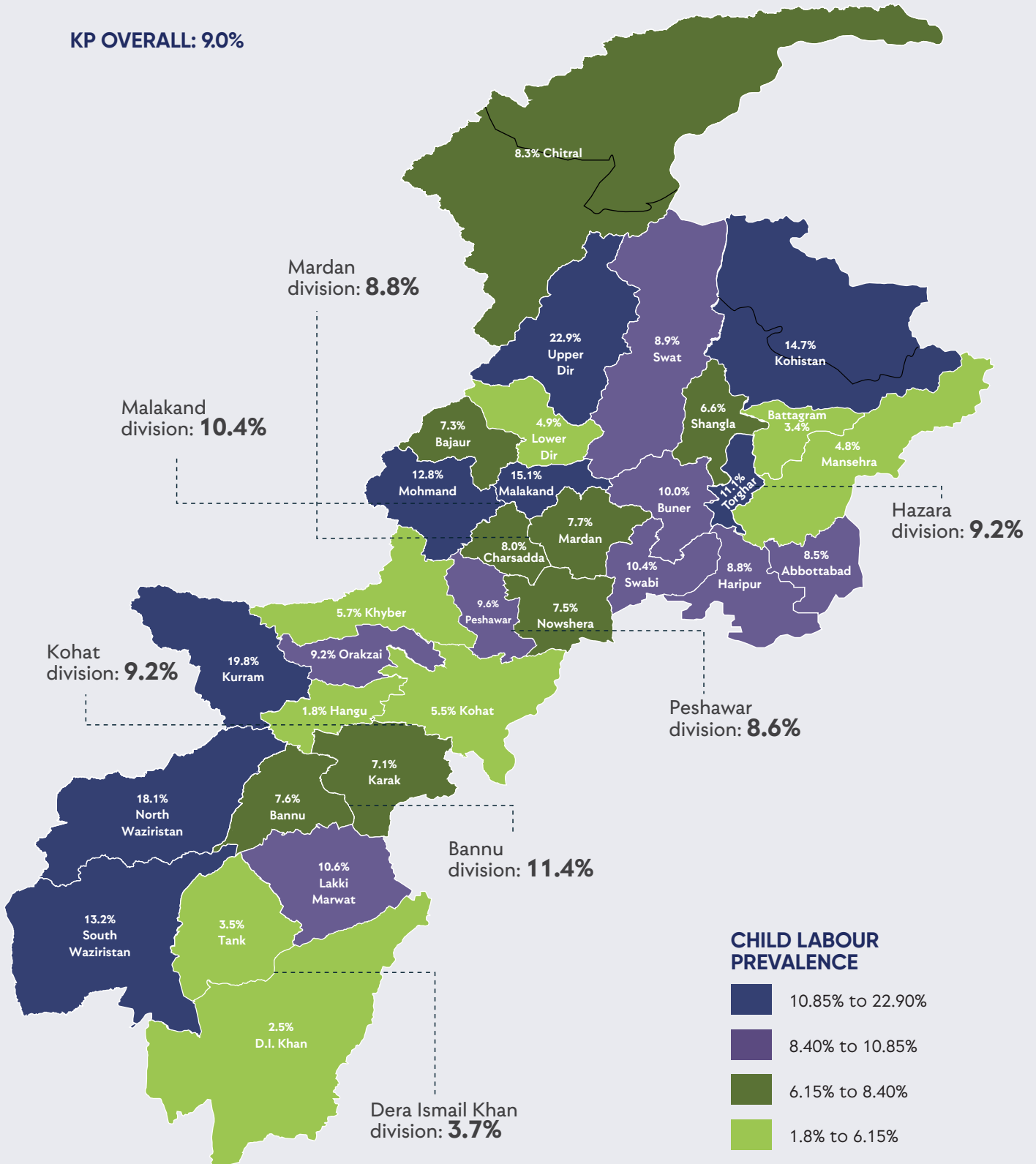
**unicef**  
for every child

# KHYBER PAKHTUNKHWA CHILD LABOUR SURVEY 2022



## CHILD LABOUR PREVALENCE (5-17 YEARS)

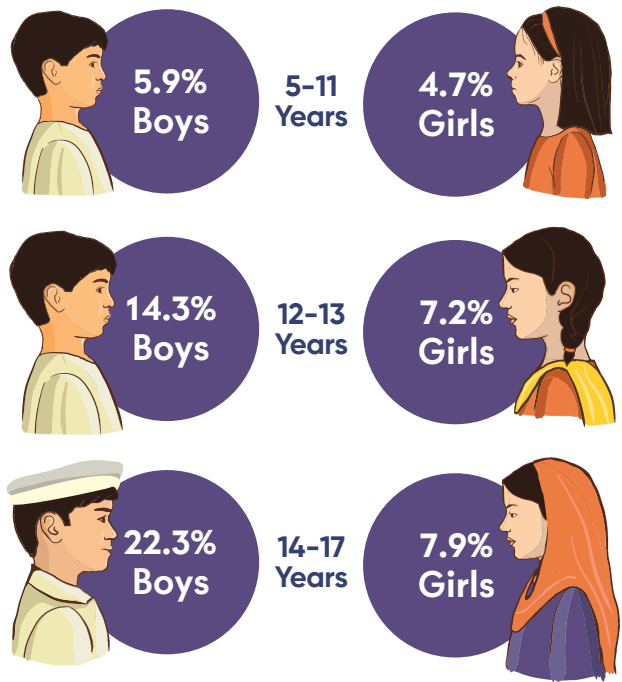
KP OVERALL: 9.0%



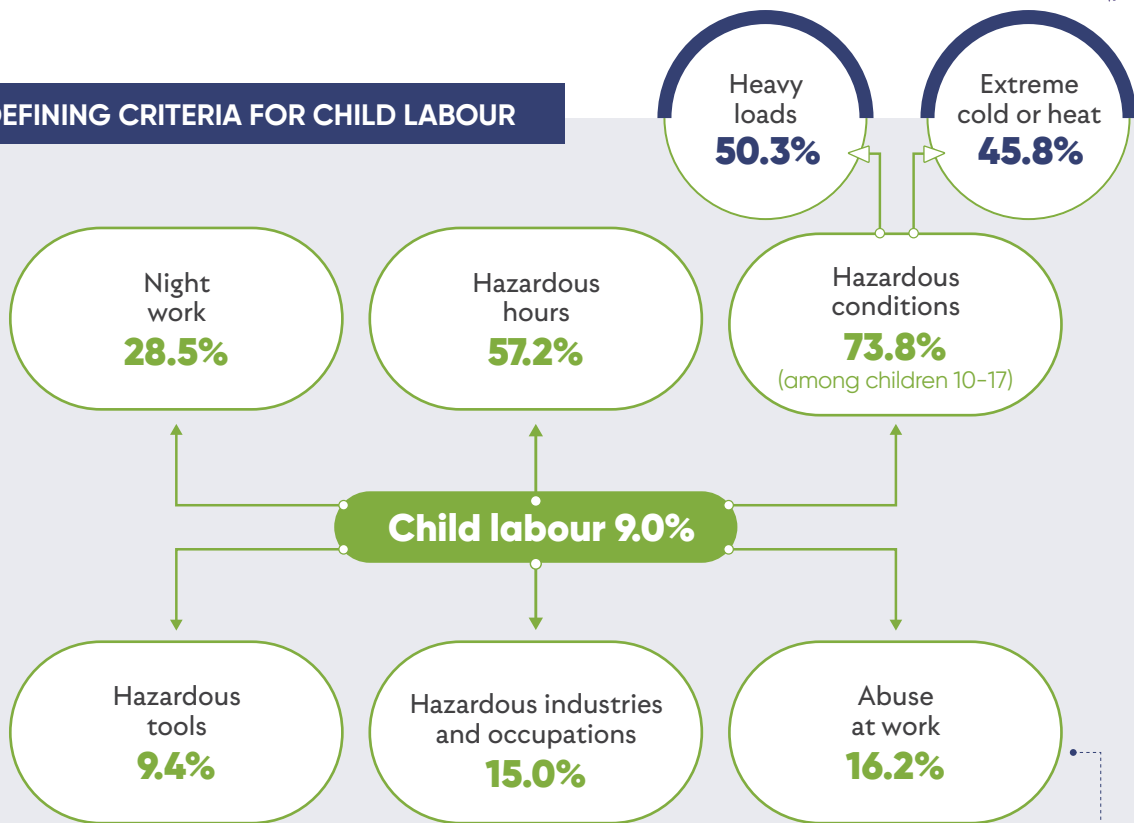
## OVERALL PREVALENCE



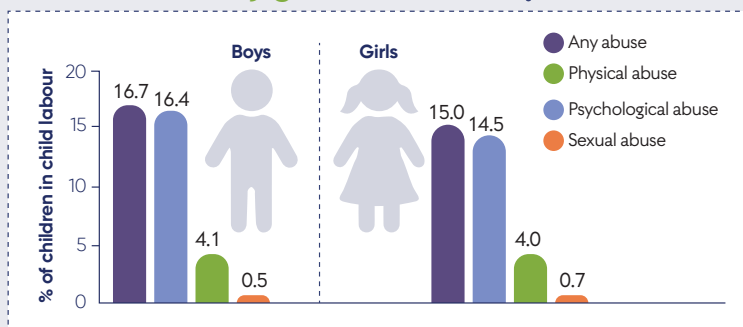
## CHILDREN IN CHILD LABOUR



## DEFINING CRITERIA FOR CHILD LABOUR



### Abuse at work by gender



# CHARACTERISTICS AND CIRCUMSTANCES OF CHILD LABOUR



Households with at least one child aged 5-17 in child labour



Overall  
19.2%



Rural  
20.1%



Urban  
13.6%

## WORK SITUATION

### Unpaid family worker

Total **71.2%**

Boys **62.4%** | Girls **90.8%**



### Labourer (non-agriculture)

Total **10.3%**

Boys **14.0%** | Girls **2.0%**



### Self-employed (non-agriculture)

Total **6.3%**

Boys **7.8%** | Girls **3.1%**



### Apprenticeship:

Total **4.5%**

Boys **6.1%** | Girls **1.1%**



## OCCUPATIONS

### Elementary occupations<sup>1</sup>

Total **61.6%**

Boys **57.2%** | Girls **71.6%**



### Skilled agricultural, forestry and fishery workers

Total **16.5%**

Boys **15.9%** | Girls **17.9%**



### Craft and related trades workers

Total **11.7%**

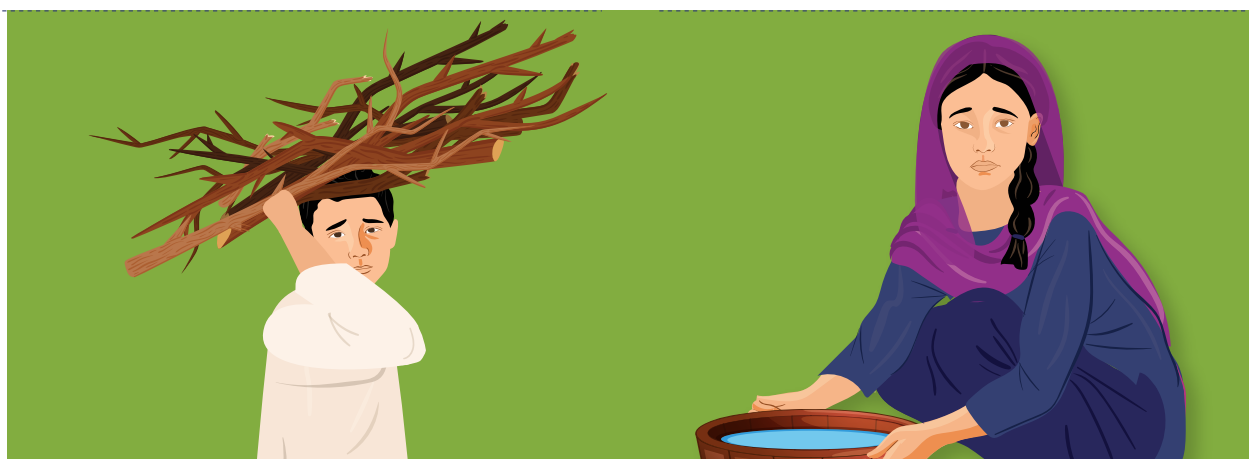
Boys **13.6%** | Girls **7.6%**



### Service and sales workers

Total **7.8%**

Boys **10.3%** | Girls **2.2%**



<sup>1</sup> Elementary occupations involve the performance of simple and routine tasks which may require the use of hand-held tools and considerable physical effort.

## INDUSTRIES

### Agriculture

Total **24.4%**

Boys **25.1%** | Girls **22.9%**



### Water collection

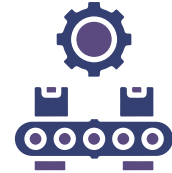
Total **19.1%**

Boys **9.7%** | Girls **40.1%**

### Forestry

Total **27.2%**

Boys **28.9%** | Girls **23.4%**



### Manufacturing

Total **7.7%**

Boys **8.0%** | Girls **7.2%**

### Wholesale and retail trade

Total **9.7%**

Boys **13.1%** | Girls **2.0%**



### Accommodation and food service activities

Total **2.1%**

Boys **2.9%** | Girls **0.2%**

### Construction

Total **4.6%**

Boys **6.4%** | Girls **0.5%**



### Transportation and storage

Total **1.9%**

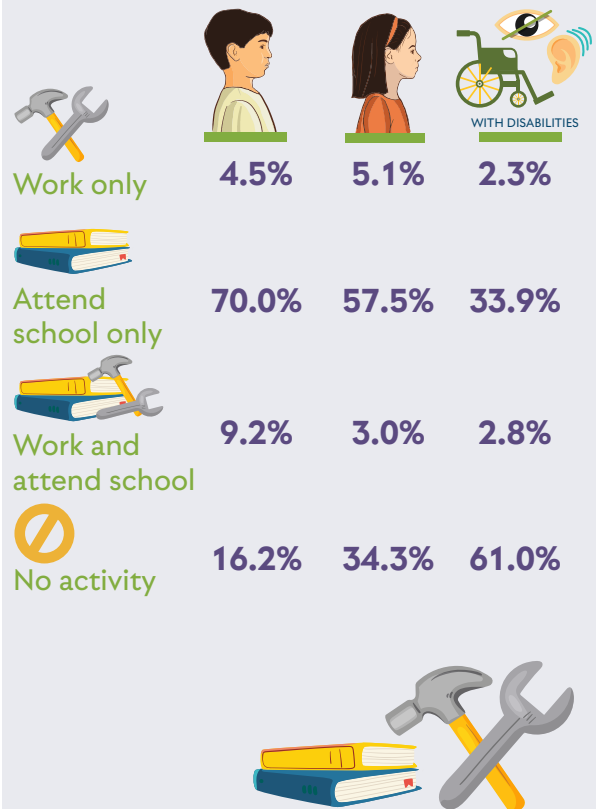
Boys **2.7%** | Girls **0.3%**

## MEDIAN HOURS WORKED BY AGE GROUP

Children aged **5-17** in child labour work a median of 14 hours per week.



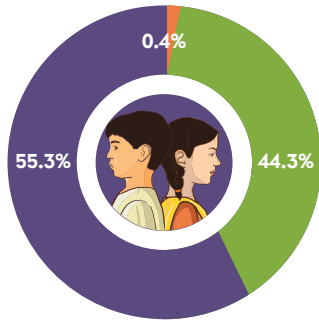
## ACTIVITIES OF CHILDREN AGED 5-17



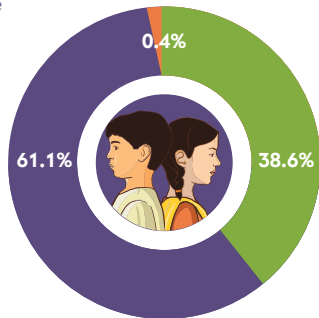
## % OF CHILDREN WITH BIRTH CERTIFICATE

Children in child labour are less likely to have a birth certificate

### Not in child labour



### In child labour



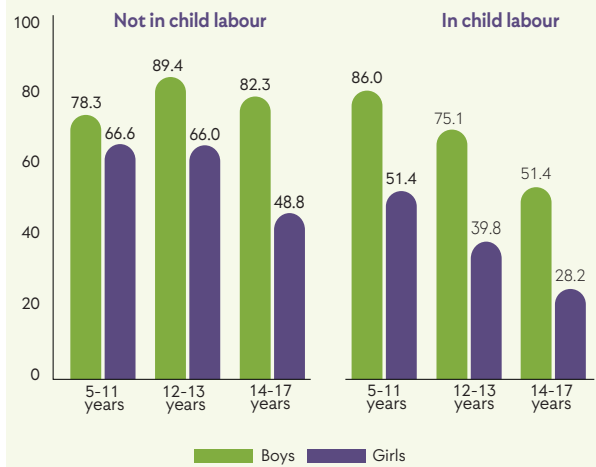
- Has no birth certificate
- Don't know
- Has birth certificate

## CONSEQUENCES

### EDUCATION

Girls and boys in **child labour** are less likely to attend school, except for boys aged 5-11 who are more likely to attend school if in child labour.

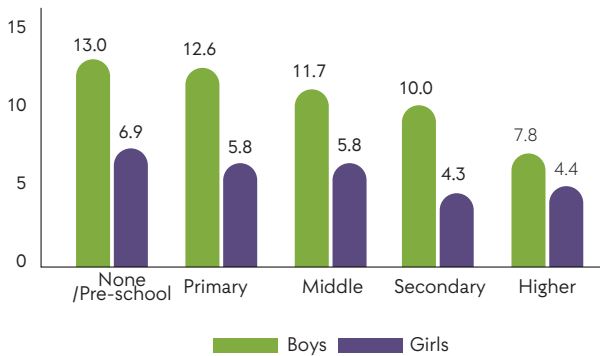
### % of children attending school



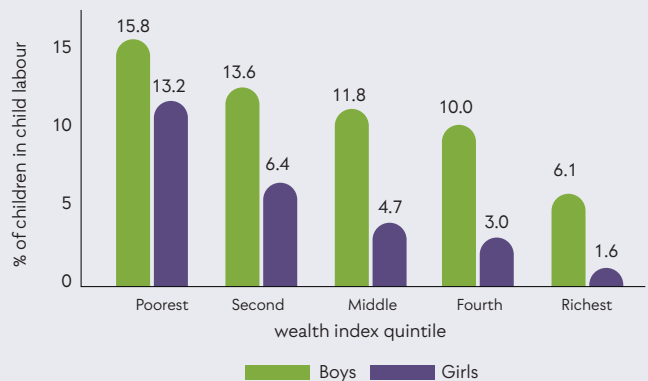
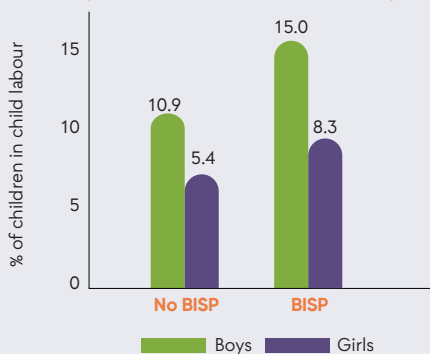
The most common issue reported by **children in child labour** is suffering from **extreme fatigue** (33.7% of children 5-17 years in child labour)

## % OF CHILDREN IN CHILD LABOUR

Children with less educated heads of household are more likely to be in child labour



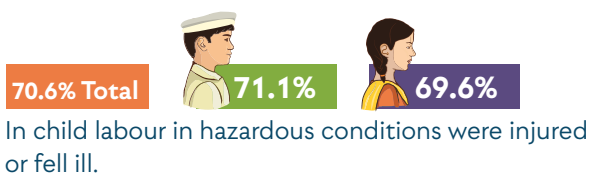
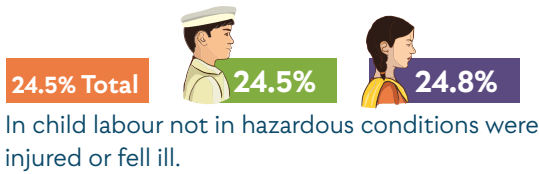
Children in poorer households are more likely to be in child labour



## INJURIES AND HAZARDOUS CONDITIONS

Children aged **10-17** working in **hazardous conditions** are **injured or fall ill** almost **3 times more often**.

### Age 10-17



## PHYSICAL AND MENTAL HEALTH

Children working in **hazardous conditions** are more likely to report a **mental health problem**.

How many report a mental health problem?

